

# MEDICAL PATHWAYS – GIPPSLAND PSYCHIATRY

Under-graduate

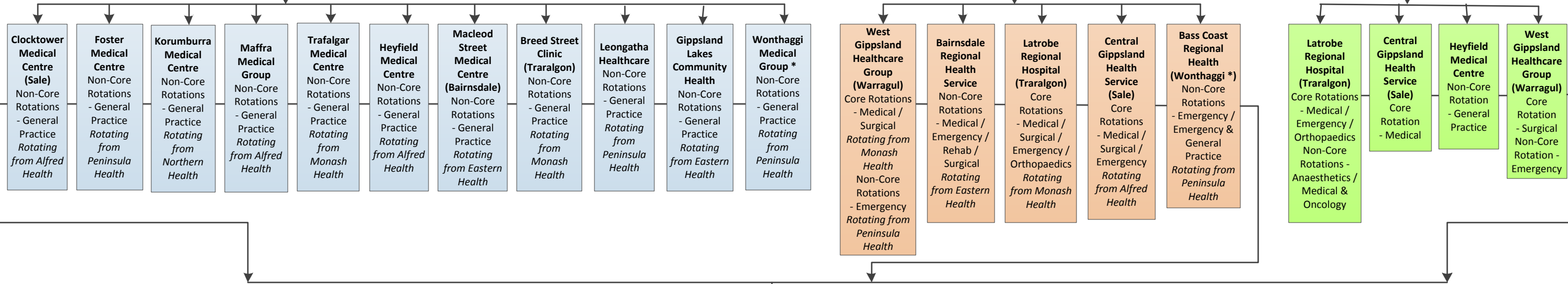
**MEDICAL SCHOOL**  
 Monash University  
 Year A – School of Rural Health Churchill Campus  
 Year 1 & 2 – Monash University Clayton Campus  
 Year 3B, 4C & 5D – School of Rural Health Latrobe Valley, West Gippsland, South Gippsland and East Gippsland Campus

Pre - Vocational

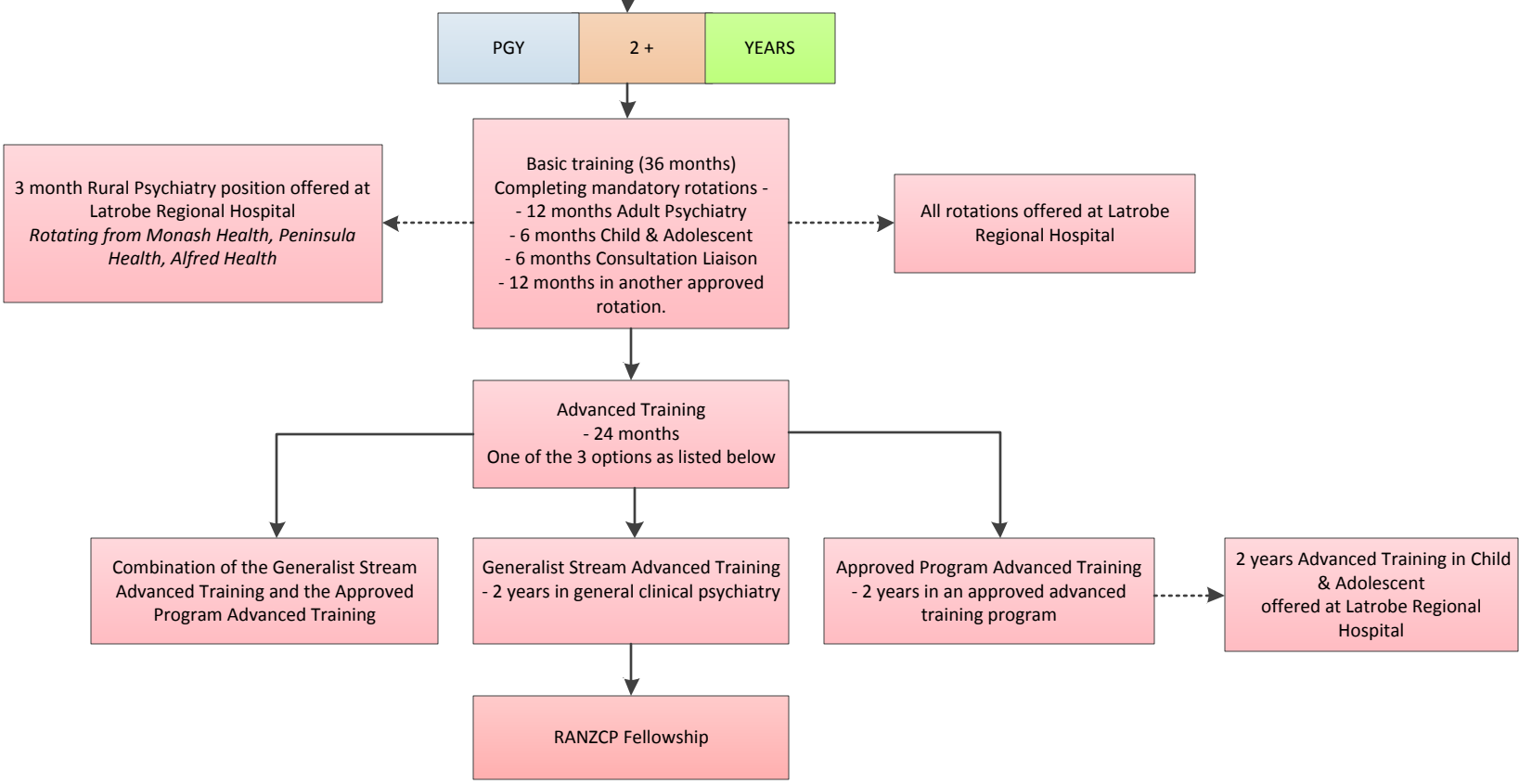
**PGPPP (PGY1)**  
 This provides junior doctors with the option of a rotation in a rural general practice.  
 10 or 12 week placements at the following Gippsland clinics -

**INTERN YEAR (PGY1)**  
 MBBS graduates are required to undertake an Intern placement for 12 months to gain registration with the AMB. This must include core & non-core rotations of hospital & clinic.  
 Below is a list of Gippsland Hospitals & clinics where the rotations can take place -

**INTERN YEAR (PGY1) – GRIT PROGRAM**  
 The GRIT Intern placement is 12 months in a rural setting across rural hospitals and community clinics for core & non-core rotations.  
 The GRIT Intern will be employed by Latrobe Regional Hospital with rotations as shown below -



Vocational



**ACRONYMS**  
 GRIT = Gippsland Rural Intern Training  
 MBBS = Bachelor of Medicine, Bachelor of Surgery  
 PGPPP = Prevocational General Practice Placement Program  
 PGY1 = Post Graduate Year 1  
 PGY2 = Post Graduate Year 2  
 RANZCP = Royal Australian & New Zealand College of Psychiatrists  
 \* = .5 EFT in clinic & .5 EFT in hospital