

MEDICAL PATHWAYS – GIPPSLAND OBSTETRICS & GYNAECOLOGY

Under-graduate

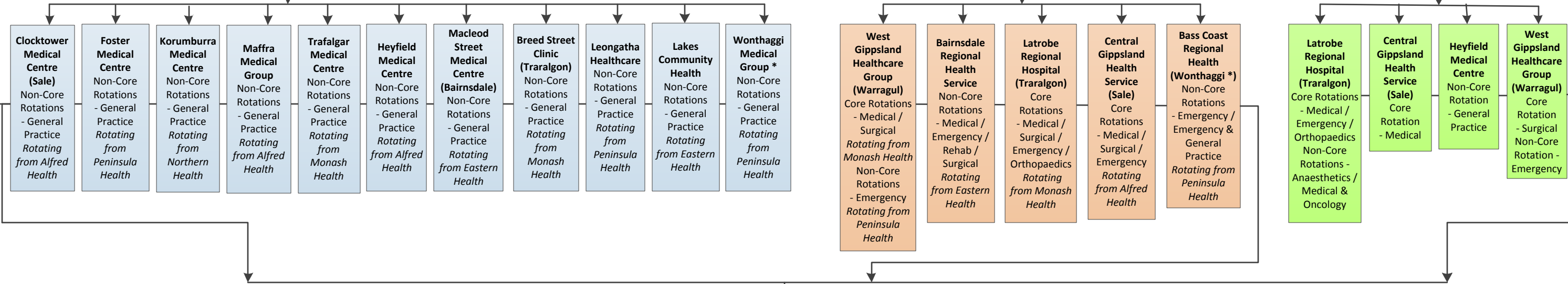
MEDICAL SCHOOL
Monash University
Year A – School of Rural Health Churchill Campus
Year 1 & 2 – Monash University Clayton Campus
Year 3B, 4C & 5D – School of Rural Health Latrobe Valley, West Gippsland, South Gippsland and East Gippsland Campuses

Pre -Vocational

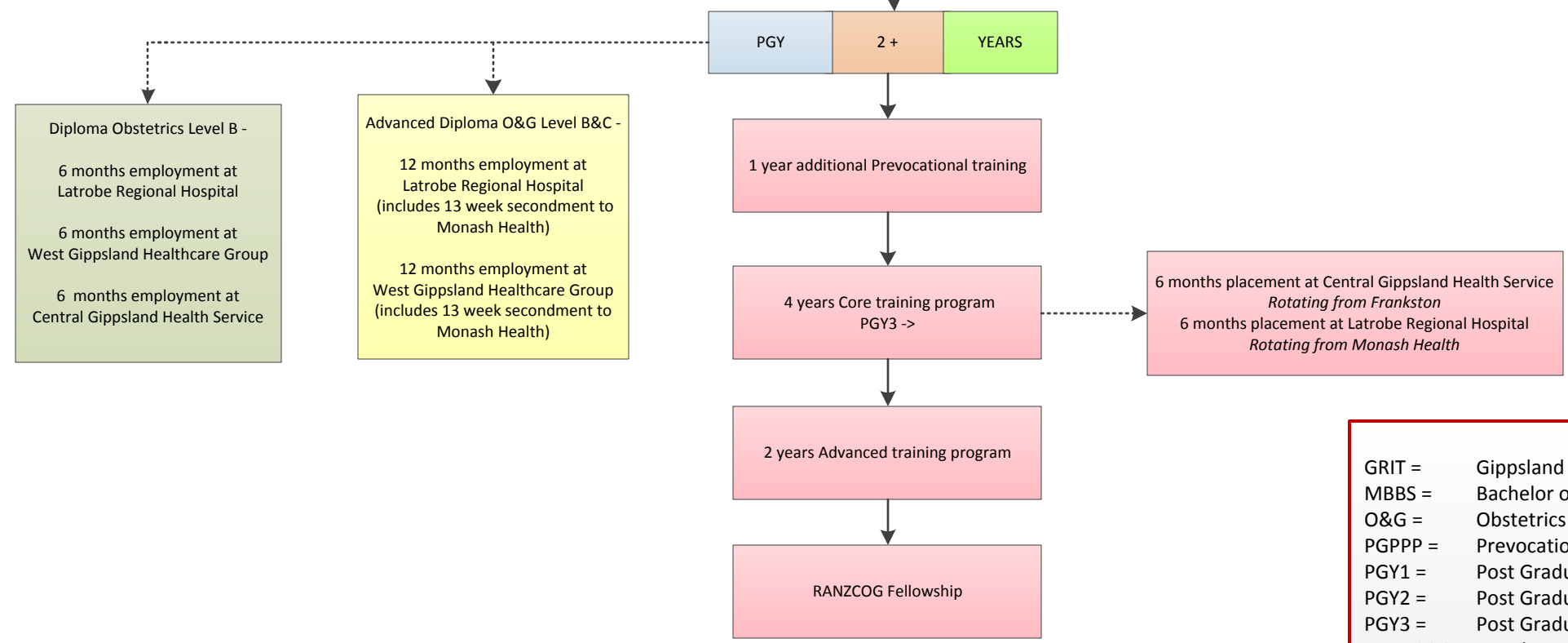
PGPPP (PGY1)
This provides junior doctors with the option of a rotation in a rural general practice.
10 or 12 week placements at the following Gippsland clinics -

INTERN YEAR (PGY1)
MBBS graduates are required to undertake an Intern placement for 12 months to gain registration with the AMB. This must include core & non-core rotations of hospital & clinic.
Below is a list of Gippsland Hospitals & clinics where the rotations can take place -

INTERN YEAR (PGY1) – GRIT PROGRAM
The GRIT Intern placement is 12 months in a rural setting across rural hospitals and community clinics for core & non-core rotations.
The GRIT Intern will be employed by Latrobe Regional Hospital with rotations as shown below -



Vocational



ACRONYMS

- GRIT = Gippsland Rural Intern Training
- MBBS = Bachelor of Medicine, Bachelor of Surgery
- O&G = Obstetrics & Gynaecology
- PGPPP = Prevocational General Practice Placement Program
- PGY1 = Post Graduate Year 1
- PGY2 = Post Graduate Year 2
- PGY3 = Post Graduate Year 3
- RANZCOG = Royal Australian & New Zealand College of Obstetrics & Gynaecologists
- * = .5 EFT in clinic & .5 EFT in hospital