

MEDICAL PATHWAYS – GIPPSLAND ANAESTHETICS

Under-graduate

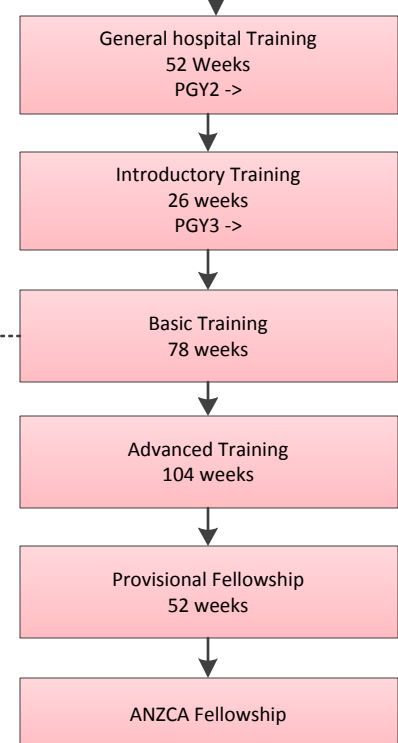
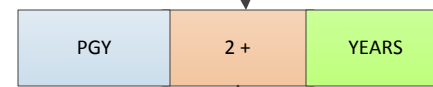
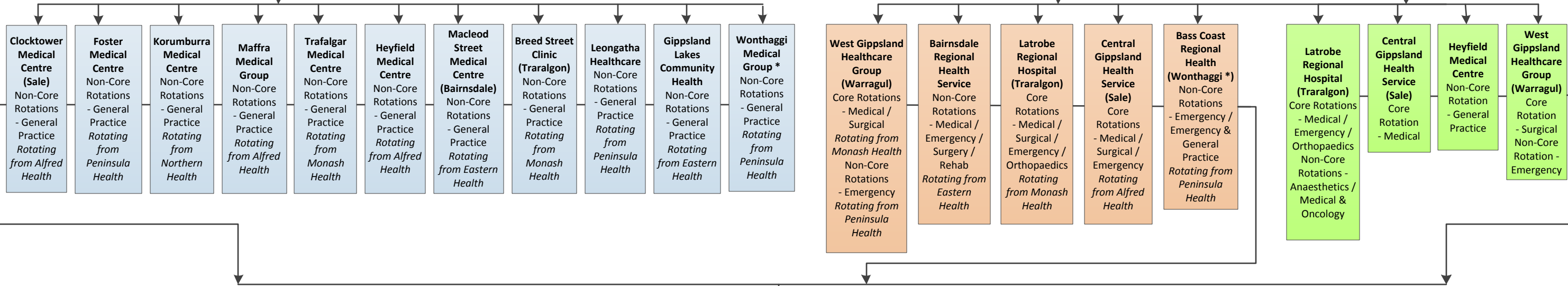
MEDICAL SCHOOL
 Monash University
 Year A - School of Rural Health Churchill Campus
 Year 1 & 2 – Monash University Clayton Campus
 Year 3B, 4C & 5D - School of Rural Health Latrobe Valley, West Gippsland, South Gippsland and East Gippsland Campuses

Pre - Vocational

PGPPP (PGY1)
 This provides junior doctors with the option of a rotation in a rural general practice.
 10 or 12 week placements at the following Gippsland clinics -

INTERN YEAR (PGY1)
 MBBS graduates are required to undertake an Intern placement for 12 months to gain registration with the AMB. This must include core & non-core rotations of hospital & clinic.
 Below is a list of Gippsland Hospitals & clinics where the rotations can take place -

INTERN YEAR (PGY1) – GRIT PROGRAM
 The GRIT Intern placement is 12 months in a rural setting across rural hospitals and community clinics for core & non-core rotations.
 The GRIT Intern will be employed by Latrobe Regional Hospital with rotations as shown below -



Latrobe Regional Hospital – 3 month placements
 Rotating from Monash Health

ACRONYMS
 AMB = Australian Medical Board
 ANZCA = Australian and New Zealand College of Anaesthetists
 GRIT = Gippsland Rural Intern Training
 MBBS = Bachelor of Medicine, Bachelor of Surgery
 PGPPP = Prevocational General Practice Placement Program
 PGY1 = Post Graduate Year 1
 PGY2 = Post Graduate Year 2
 * = .5 EFT in clinic & .5 EFT in hospital

Vocational